

SOITRON*

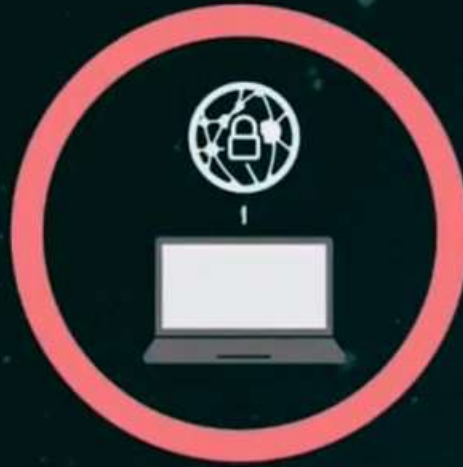
Budúcnosť (bez) hesiel
Koncept "Zero Trust" (nielen) pre privilegované **účty**



Leading Causes of Data Breaches



Weak
Passwords



Insecure
Remote Access



Unpatched
Software



WEAK PASSWORDS

- Regular & privileged users
- Same password for different accounts
- Accounts sharing
- Poor passwords



81%

of hacking-related breaches leveraged either stolen and/or weak passwords

Verizon Data Breach Report 2018



root



Enter Password



10 000

most common passwords would gain access up to



of user accounts in

2013

Security study by Deloitte 2013



REMOTE ACCESS

- Vulnerabilities & backdoors
- Port forwards into production
- 3rd party shared accounts
- No audit of performed activities



Data Breach!



Cyber
Attack!

Security Breach!



Hackers Attack Every **39** Seconds

2 244

Attacks Attempts
Daily Average

Security Magazine 2017



PATCH MANAGEMENT

- Noncompliance of own infrastructure for both servers and end-points
- No or just poor control of BYOD and 3rd parties devices



7/10

7 out of 2019 top 10 most targeted vulnerabilities are known 2+ years

8/10

8 out of 2019 top 10 most targeted vulnerabilities target Microsoft products

Recorded Future 2019





What type of security is the
hardest to get past for a hacker?

70%

say multi-factor authentication
(38%) or encryption (32%) are
the biggest hacker obstacles

Thycotic Survey Black Hat Conference USA 2017

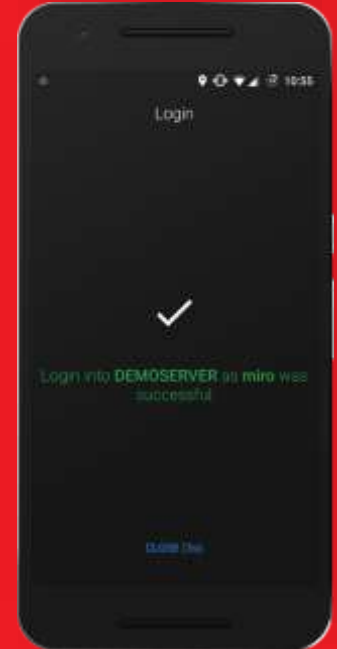


Replace passwords

- Smartphone token
- Biometrics & PIN
- Geolocation
- Proximity
- Dynamic passwords



Excalibur



Key functions

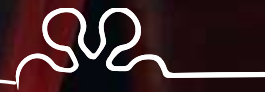
- Assisted or self registration
- Online & offline (OTP) login
- **Scenario „I forgot my phone“**
- Peer verification
- 4-eyes check
- Integration:



MS Active Directory, ADFS,
Radius, custom applications



Demonstration online/offline login



**Never trust
Always verify
=
ZERO TRUST**

Standard Zero Trust Approach

Don't trust any user or device by default

Prove identity (MFA)

Validate device (Desktop mgmt., MDM)

Validate source network (intranet, VPN, internet)

Apply access policies based on identity, device and source network

Microsegment the network infrastructure and create microperimeters

Excalibur Approach

Minimize the attack surface

Utilize massive multi factor authentication

Separate the app processing from endpoint device

Containerize sensitive/vulnerable apps

Apply policies based on identity and geo-location

Integrate session recording and auditing

Microsegment the network infrastructure and create microperimeters



INTERNAL NETWORK
OR INTERNET

FIREWALL
WAF



WEB BROWSER

HTTPS



EXCALIBUR

MFA
HTML5 proxy
peripherals
connector
app launcher
session recording
session indexing

RDP/SSH/TELNET
VNC/HTTPS

VNC

EXISTING APPS, SERVERS
AND DEVICES



Containerized app

APP CONTAINER
WINE
XVNC

Hardened Linux OS

traffic whitelisting
syscalls whitelisting



legacy ActiveX / rich win32 wine containerized app

3DMark 2001

Project Name: My Benchmark
Result: (Tests not run yet)

Selected Tests:
Game Tests: 7 of 7
Theoretical Tests: 6 of 6
DX9 Feature Tests: 4 of 4
Pro Version Tests: 0 of 4

Options:
Demo Logging: Disabled
Demo Sounds: Enabled
Game Detail Level: Low

Display and CPU Settings

ATI(R) HD Graphics 4300
1920x1080, 32 bit color, compressed textures
D3D Full Hardware T&L
Antialiasing: None

Pro Tools:
Result Progress Batch Run

Run

What's My Browser.com

WHAT BROWSER? YOUR WEB BROWSER IS:
Internet Explorer 9 on Windows XP
Internet Explorer 8 Compatibility View

Zoom In | Zoom Out | Zoom All | Zoom Window | Pan | Show/Hide Toolbar | Show/Hide LayoutBar | Print | Background

this is a evaluation version, the purchased version does not display this notice.
AutoDwg DwgViewX 1.754 www.AutoDwg.com

Viewing of CAD drawings requests installation of DWGViewX active-x, which may take few minutes... please accept all IE warnings during this installation.

This demo page automatically install Microsoft signed .cab as an IE plugin, if it still won't show up the drawing, please download and install it from following link, then press F5 button to refresh this page and view the drawing.

[Download DWGViewX](#)

The control only works with IE directly, to work with Firefox or Chrome, please install the ActiveX manually and use the ff-active-x-host, IE Tab Plus or other add-ons to support the ActiveX control.

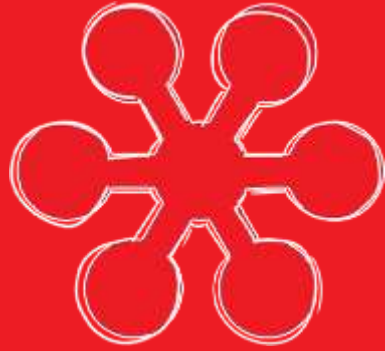
IE Tab plus:
<http://addons.mozilla.org/en-US/firefox/addon/ie-tab-2-ff-36>
<http://code.google.com/p/ff-active-x-host/>

ZERO TRUST FUTURE

with SOITRON

powered by EXCALIBUR





THANK YOU